



Test Report

No.: GZ1103034678/CHEM

Date: APR 01, 2011

Page 1 of 7

PAD DONGGUAN PAGODA TECHNOLOGUY CO;ITD (PingShingKeJi)
PAD INDUSTRY GARDEN,LI<00FF>S NIDUSTRIAL ZONE,HUANGJIANG TOWN,
DONGGUAN CITY,GUANGDONG P.R.CHINA

The following sample(s) was/were submitted and identified on behalf of the applicant as CHIP RESISTOR

SGS Job No. : SZ13020753
SGS Internal Reference No. : 9.3
Client Reference Information : Main Substance: Ceramic/Glass
Date of Sample Received : MAR 29, 2011
Testing Period : MAR 29, 2011 TO APR 01, 2011

Test Requested : Selected test (s) as requested by client.

Test Method : Please refer to next page(s).

Test Result(s) : Please refer to next page(s).

Signed for and on behalf of
SGS-CSTC Ltd.

Manson Yang
Approved Signatory

This document is issued by the Company under its General Conditions of Service printed overleaf or available on request and accessible at http://www.sgs.com/terms_and_conditions.htm. Attention is drawn to the limitation of liability, indemnification and jurisdiction issues defined therein. Any holder of this document is advised that information contained hereon reflects the Company's findings at the time of its intervention only and within the limits of Client's instructions, if any. The Company's sole responsibility is to its Client and this document does not generate parties to a transaction from exercising all their rights and obligations under the transaction documents. Any unauthorized alteration, forgery or falsification of the content or appearance of this document is unlawful and offenders may be prosecuted to the fullest extent of the law.
Unless otherwise stated, the results shown in this test report refer only to the sample(s) tested. This document cannot be reproduced except in full, without prior approval of the Company.



SGS - Standards Technical Services Co., Ltd
Guangzhou Industrial Chemical Laboratory

198 Kazhu Road, Sointech Park, Guangzhou Economic & Technology Development District, Guangzhou, China 510663 | (86-20) 82155555 | (86-20) 82075125 | www.cn.sgs.com
中国·广州·经济技术开发区科学城科珠路198号 邮编: 510663 | (86-20) 82155555 | (86-20) 82075125 | e sgs.china@sgs.com

Member of the SGS Group (SGS SA)

Test Results:

Description for specimen 1 : White particle w/ black surface & silvery metal edge

Elementary Analysis

Test Item(s)	Unit	Test Method (Reference)	Result	MDL
Cadmium (Cd)	mg/kg	IEC 62321: 2008, ICP-OES	N.D.	2
Lead (Pb)	mg/kg	IEC 62321: 2008, ICP-OES	228	2
Mercury (Hg)	mg/kg	IEC 62321: 2008, ICP-OES	N.D.	2
Hexavalent Chromium (CrVI) by alkaline extraction	mg/kg	IEC 62321: 2008, UV-Vis	N.D.	2

Note:

1. mg/kg = ppm
2. N.D. = Not Detected (< MDL)
3. MDL = Method Detection Limit

Flame Retardants

Test Item(s)	Unit	Test Method (Reference)	Result	MDL
Sum of PBBs	mg/kg	-	N.D.	-
Monobromobiphenyl	mg/kg	IEC 62321: 2008, GC-MS	N.D.	5
Dibromobiphenyl	mg/kg	IEC 62321: 2008, GC-MS	N.D.	5
Tribromobiphenyl	mg/kg	IEC 62321: 2008, GC-MS	N.D.	5
Tetrabromobiphenyl	mg/kg	IEC 62321: 2008, GC-MS	N.D.	5
Pentabromobiphenyl	mg/kg	IEC 62321: 2008, GC-MS	N.D.	5
Hexabromobiphenyl	mg/kg	IEC 62321: 2008, GC-MS	N.D.	5
Heptabromobiphenyl	mg/kg	IEC 62321: 2008, GC-MS	N.D.	5
Octabromobiphenyl	mg/kg	IEC 62321: 2008, GC-MS	N.D.	5
Nonabromobiphenyl	mg/kg	IEC 62321: 2008, GC-MS	N.D.	5
Decabromobiphenyl	mg/kg	IEC 62321: 2008, GC-MS	N.D.	5
Sum of PBDEs	mg/kg	-	N.D.	-
Monobromodiphenyl ether	mg/kg	IEC 62321: 2008, GC-MS	N.D.	5
Dibromodiphenyl ether	mg/kg	IEC 62321: 2008, GC-MS	N.D.	5
Tribromodiphenyl ether	mg/kg	IEC 62321: 2008, GC-MS	N.D.	5
Tetrabromodiphenyl ether	mg/kg	IEC 62321: 2008, GC-MS	N.D.	5
Pentabromodiphenyl ether	mg/kg	IEC 62321: 2008, GC-MS	N.D.	5
Hexabromodiphenyl ether	mg/kg	IEC 62321: 2008, GC-MS	N.D.	5
Heptabromodiphenyl ether	mg/kg	IEC 62321: 2008, GC-MS	N.D.	5
Octabromodiphenyl ether	mg/kg	IEC 62321: 2008, GC-MS	N.D.	5
Nonabromodiphenyl ether	mg/kg	IEC 62321: 2008, GC-MS	N.D.	5
Decabromodiphenyl ether	mg/kg	IEC 62321: 2008, GC-MS	N.D.	5

Note:

1. mg/kg = ppm
2. N.D. = Not Detected (< MDL)
3. MDL = Method Detection Limit
4. "-" = Not regulated

This document is issued by the Company under its General Conditions of Service printed overleaf or available on request and accessible at http://www.sgs.com/terms_and_conditions.htm. Attention is drawn to the limitation of liability, indemnification and jurisdiction issues defined therein. Any holder of this document is advised that information contained hereon reflects the Company's findings at the time of its intervention only and within the limits of Client's instructions, if any. The Company's sole responsibility is to its Client and this document does not generate parties to a transaction from exercising all their rights and obligations under the transaction documents. Any unauthorized alteration, forgery or falsification of the content or appearance of this document is unlawful and offenders may be prosecuted to the fullest extent of the law.

Unless otherwise stated, the results shown in this test report refer only to the sample(s) tested. This document cannot be reproduced except in full, without prior approval of the Company.





Test Report

No.: GZ1103034678/CHEM

Date: APR 01, 2011

Page 3 of 7

PFOS Perfluorooctane sulfonates

Test Item(s)	Unit	Test Method (Reference)	Result	MDL
Perfluorooctane sulfonates (PFOS)				
PFOS – Acid				
PFOS – Metal Salt	mg/kg	EPA 3550C: 2007, LC-MS	N.D.	10
PFOS – Amide				

Note:

1. mg/kg = ppm
2. N.D. = Not Detected (< MDL)
3. MDL = Method Detection Limit

For reference: Entry 53 of Regulation (EC) No 552/2009 amending Annex XVII of REACH Regulation (EC) No 1907/2006 (previously restricted under Directive 2006/122/EC):

- (1) May not be placed on the market or used as a substance or constituent of preparations in a concentration equal to or higher than 0,005 % by mass.
- (2) May not be placed on the market in semi-finished products or articles, or parts thereof, if the concentration of PFOS is equal to or higher than 0,1% by mass calculated with reference to the mass of structurally or microstructurally distinct parts that contain PFOS or, for textiles or other coated materials, if the amount of PFOS is equal to or higher than 1µg /m² of the coated material.

Halogen

Test Item(s)	Unit	Test Method (Reference)	Result	MDL
Fluorine (F)	mg/kg	BS EN 14582:2007, IC	N.D.	50
Chlorine (Cl)	mg/kg	BS EN 14582:2007, IC	N.D.	50
Bromine (Br)	mg/kg	BS EN 14582:2007, IC	N.D.	50
Iodine (I)	mg/kg	BS EN 14582:2007, IC	N.D.	50

Note:

1. mg/kg = ppm
2. N.D. = Not Detected (< MDL)
3. MDL = Method Detection Limit

Remark : As requested by client, the testing was conducted as whole / part sample, for the sample can't be disjointed.

This document is issued by the Company under its General Conditions of Service printed overleaf or available on request and accessible at http://www.sgs.com/terms_and_conditions.htm. Attention is drawn to the limitation of liability, indemnification and jurisdiction issues defined therein. Any holder of this document is advised that information contained hereon reflects the Company's findings at the time of its intervention only and within the limits of Client's instructions, if any. The Company's sole responsibility is to its Client and this document does not generate parties to a transaction from exercising all their rights and obligations under the transaction documents. Any unauthorized alteration, forgery or falsification of the content or appearance of this document is unlawful and offenders may be prosecuted to the fullest extent of the law. Unless otherwise stated, the results shown in this test report refer only to the sample(s) tested. This document cannot be reproduced except in full, without prior approval of the Company.



SGS Standards Technical Services Co., Ltd
Guangzhou Environmental Chemical Laboratory

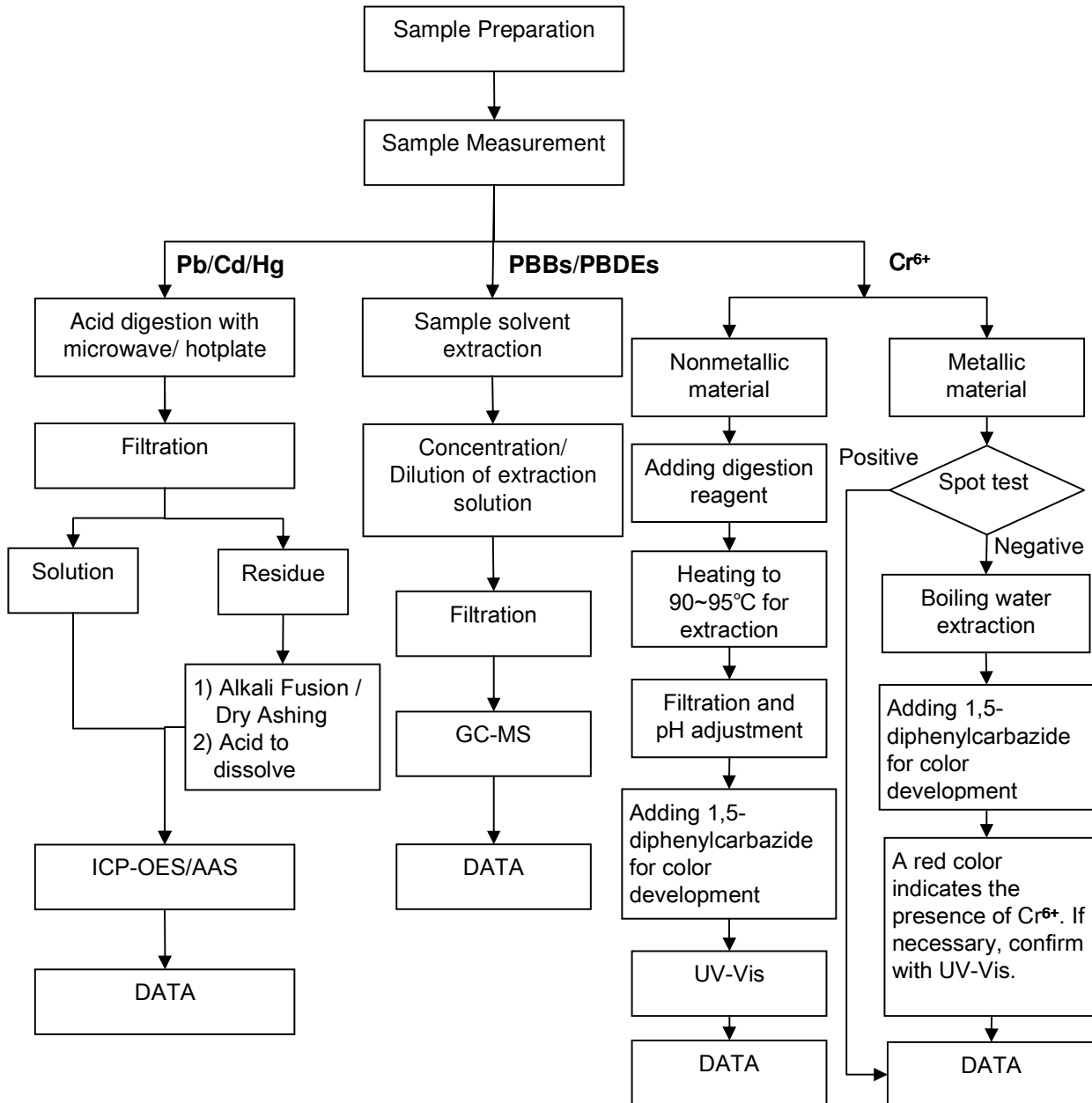
198 Kazhu Road, Sointech Park, Guangzhou Economic & Technology Development District, Guangzhou, China 510663 | (86-20) 82155555 | (86-20) 82075125 | www.cn.sgs.com
中国·广州·经济技术开发区科学城科珠路198号 邮编: 510663 | (86-20) 82155555 | (86-20) 82075125 | e sgs.china@sgs.com

Member of the SGS Group (SGS SA)

ATTACHMENTS

RoHS Testing Flow Chart

- 1) Name of the person who made testing: Bella Wang / Cutey Yu / Ross Zhan
- 2) Name of the person in charge of testing: Adams Yu / Ryan Yang
- 3) These samples were dissolved totally by pre-conditioning method according to below flow chart (Cr6+ and PBBs/PBDEs test method excluded).



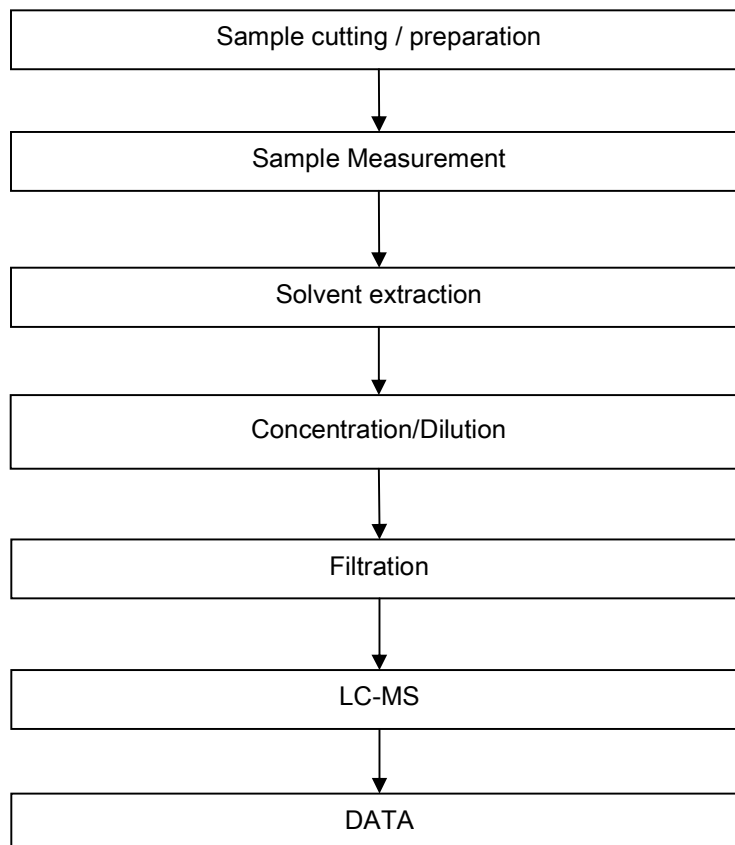
This document is issued by the Company under its General Conditions of Service printed overleaf or available on request and accessible at http://www.sgs.com/terms_and_conditions.htm. Attention is drawn to the limitation of liability, indemnification and jurisdiction issues defined therein. Any holder of this document is advised that information contained hereon reflects the Company's findings at the time of its intervention only and within the limits of Client's instructions, if any. The Company's sole responsibility is to its Client and this document does not generate parties to a transaction from exercising all their rights and obligations under the transaction documents. Any unauthorized alteration, forgery or falsification of the content or appearance of this document is unlawful and offenders may be prosecuted to the fullest extent of the law. Unless otherwise stated, the results shown in this test report refer only to the sample(s) tested. This document cannot be reproduced except in full, without prior approval of the Company.



ATTACHMENTS

PFOA / PFOS Testing Flow Chart

- 1) Name of the person who made testing: Cindy Huang
- 2) Name of the person in charge of testing: Ryan Yang



This document is issued by the Company under its General Conditions of Service printed overleaf or available on request and accessible at http://www.sgs.com/terms_and_conditions.htm. Attention is drawn to the limitation of liability, indemnification and jurisdiction issues defined therein. Any holder of this document is advised that information contained hereon reflects the Company's findings at the time of its intervention only and within the limits of Client's instructions, if any. The Company's sole responsibility is to its Client and this document does not generate parties to a transaction from exercising all their rights and obligations under the transaction documents. Any unauthorized alteration, forgery or falsification of the content or appearance of this document is unlawful and offenders may be prosecuted to the fullest extent of the law.

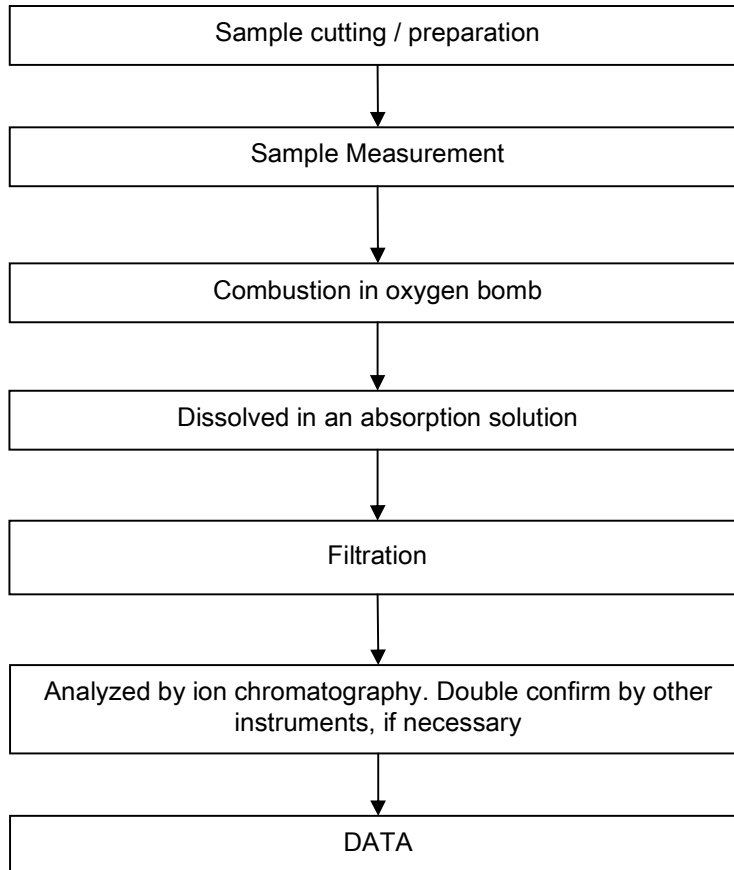
Unless otherwise stated, the results shown in this test report refer only to the sample(s) tested. This document cannot be reproduced except in full, without prior approval of the Company.



ATTACHMENTS

Halogen Testing Flow Chart

- 1) Name of the person who made testing: Liang Wang
- 2) Name of the person in charge of testing: Michelle Song



This document is issued by the Company under its General Conditions of Service printed overleaf or available on request and accessible at http://www.sgs.com/terms_and_conditions.htm. Attention is drawn to the limitation of liability, indemnification and jurisdiction issues defined therein. Any holder of this document is advised that information contained hereon reflects the Company's findings at the time of its intervention only and within the limits of Client's instructions, if any. The Company's sole responsibility is to its Client and this document does not generate parties to a transaction from exercising all their rights and obligations under the transaction documents. Any unauthorized alteration, forgery or falsification of the content or appearance of this document is unlawful and offenders may be prosecuted to the fullest extent of the law.

Unless otherwise stated, the results shown in this test report refer only to the sample(s) tested. This document cannot be reproduced except in full, without prior approval of the Company.



Sample photo :



SGS authenticate the photo on original report only

*** End of Report ***

This document is issued by the Company under its General Conditions of Service printed overleaf or available on request and accessible at http://www.sgs.com/terms_and_conditions.htm. Attention is drawn to the limitation of liability, indemnification and jurisdiction issues defined therein. Any holder of this document is advised that information contained hereon reflects the Company's findings at the time of its intervention only and within the limits of Client's instructions, if any. The Company's sole responsibility is to its Client and this document does not generate parties to a transaction from exercising all their rights and obligations under the transaction documents. Any unauthorized alteration, forgery or falsification of the content or appearance of this document is unlawful and offenders may be prosecuted to the fullest extent of the law. Unless otherwise stated, the results shown in this test report refer only to the sample(s) tested. This document cannot be reproduced except in full, without prior approval of the Company.

